

# Gathering animal density data

Nikki Dictson and Kevin Wagner, PhD  
Texas Water Resources Institute

# General Steps To Develop Livestock & Wildlife Population Estimates

1. Determine number of animals in each county
2. Multiply that number by the percentage of each county that lies in the watershed
3. Validate/confirm with local experts

**EXCEPTION: Regions with known CAFOs (Confined Animal Feeding Operations)**

# General guidelines/considerations

- Animal numbers fluctuate
- 1 year of data generally insufficient
  - Unless that's what's available (generally the case)
- Using 5-7 yr average is better approach
  - Generally available for cattle, goats & sheep

# Sources of animal density data

- Livestock
  - Texas Agricultural Statistics
  - USDA Census of Agriculture
- Deer
  - TPWD White-tailed deer survey & reports
  - TPWD County Biologists
- Feral hogs
  - TPWD County Biologists
  - Stakeholders
  - Various studies



# Livestock density data

12.3 million cattle and calves



# Texas Agricultural Statistics

- USDA's NASS Texas Field Office & TDA
  - [http://www.nass.usda.gov/Statistics by State/Texas/](http://www.nass.usda.gov/Statistics_by_State/Texas/)
  - Data compiled annually (Google Texas Ag Stats & Year)
- Best source of county data for:
  - Cattle
  - Goats
  - Sheep
- Not all livestock categories reported at county level:
  - Hogs
  - Poultry
- Some livestock categories not reported:
  - Horses

# Census of Agriculture

- Conducted every 5 years
- 2012 Census of Agriculture (Next one end of 2017)
  - Issued May 2014
  - [http://www.agcensus.usda.gov/Publications/2012/Full\\_Report/Volume\\_1,\\_Chapter\\_2\\_County\\_Level/Texas/](http://www.agcensus.usda.gov/Publications/2012/Full_Report/Volume_1,_Chapter_2_County_Level/Texas/)
- Primary source of county data for:
  - Hogs
  - Poultry
  - Horses
  - Sheep (in counties not reported in Texas Ag Stats)
  - Goats (in counties not reported in Texas Ag Stats)

# Texas Ag Statistics – Cattle Inventory

- Texas Cattle Inventory Categories
  - All Cattle & Calves
  - Beef Cows
  - Milk Cows
- Beef Cows = most appropriate for assessing cattle numbers for cow/calf operations
- All Cattle & Calves = if feedlots & many stocker operations



# Texas Ag Statistics – Cattle Inventory

Texas Cattle Inventory and Milk Production by County

District Code	County FIPS Code	District and County	All Cattle & Calves <sup>1</sup> January 1 Inventory (head)		Beef Cows January 1 Inventory (head)		Milk Cows January 1 Inventory (head)	
			2011	2012	2011	2012	2011	2012
11	011	Armstrong	32,000	31,000	11,000	10,000	*	*
	045	Briscoe	19,000	18,000	11,000	10,000	*	*
	065	Carson	35,000	33,000	*	*	*	*
	069	Castro	515,000	500,000	11,000	10,000	36,000	36,500
	111	Dallam	205,000	200,000	*	*	*	*
	117	Deaf Smith	595,000	600,000	20,000	18,500	41,000	42,000
	153	Floyd	75,000	74,000	12,000	11,000	*	*
	179	Gray	100,000	100,000	*	*	*	*
	189	Hale	125,000	120,000	7,000	6,400	18,400	18,800
	195	Hansford	265,000	280,000	*	*	*	*
	205	Hartley	295,000	300,000	18,000	16,500	25,000	25,000
	211	Hemphill	72,000	73,000	13,000	11,900	*	*

# 2012 Census Agriculture Data

**Table 11.** Cattle and Calves -- Inventory and Sales: 2012 and 2007

**Table 12.** Hogs and Pigs -- Inventory and Sales: 2012 and 2007

**Table 13.** Sheep and Lambs -- Inventory, Wool Production & Sales: 2012 & 2007

**Table 14.** All Goats -- Inventory and Sales: 2012 and 2007

**Table 18.** Equine -- Inventory and Sales: 2012 and 2007

**Table 19.** Poultry -- Inventory and Sales: 2012 and 2007



# Validating Livestock Estimates & Distributing Across Watershed

- Best Approach = Consult With:
  - Ag Workgroup
  - NRCS District Conservationists / Local SWCDs
    - <http://www.tsswcb.state.tx.us/swcds/locatormap>
  - County Extension Agents
    - <https://counties.agrilife.org/>



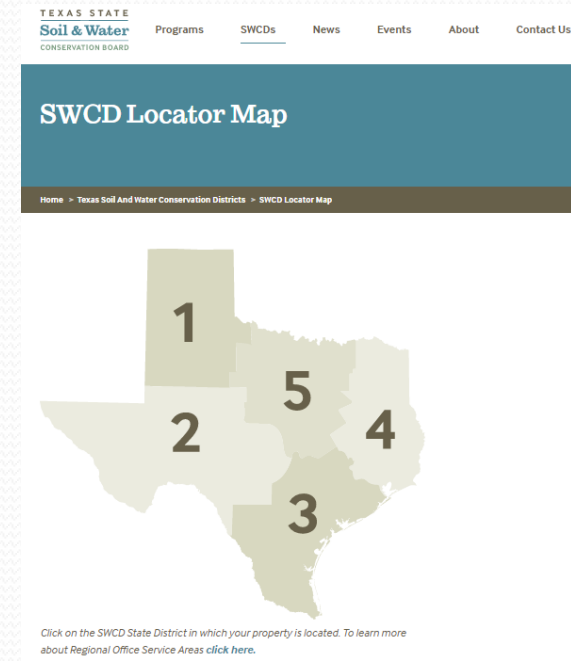
TEXAS A&M  
**AGRI LIFE**  
EXTENSION

## AgriLife Extension County Offices

Directory

[ By District | A | B | C | D | E | F | G | H | I | J | K | L | M | N | O | P | Q | R | S | T | U | V | W | X | Y | Z | Urban ]

- A
  - [Anderson County](#)
  - [Andrews County](#)
  - [Angelina County](#)
  - [Aransas County](#)
  - [Archer County](#)
  - [Armstrong County](#)




TEXAS STATE  
**Soil & Water**  
CONSERVATION BOARD

Programs SWCDs News Events About Contact Us

## SWCD Locator Map

Home > Texas Soil And Water Conservation Districts > SWCD Locator Map



Click on the SWCD State District in which your property is located. To learn more about Regional Office Service Areas [click here](#).



# Deer density data

3.6 million deer in Texas



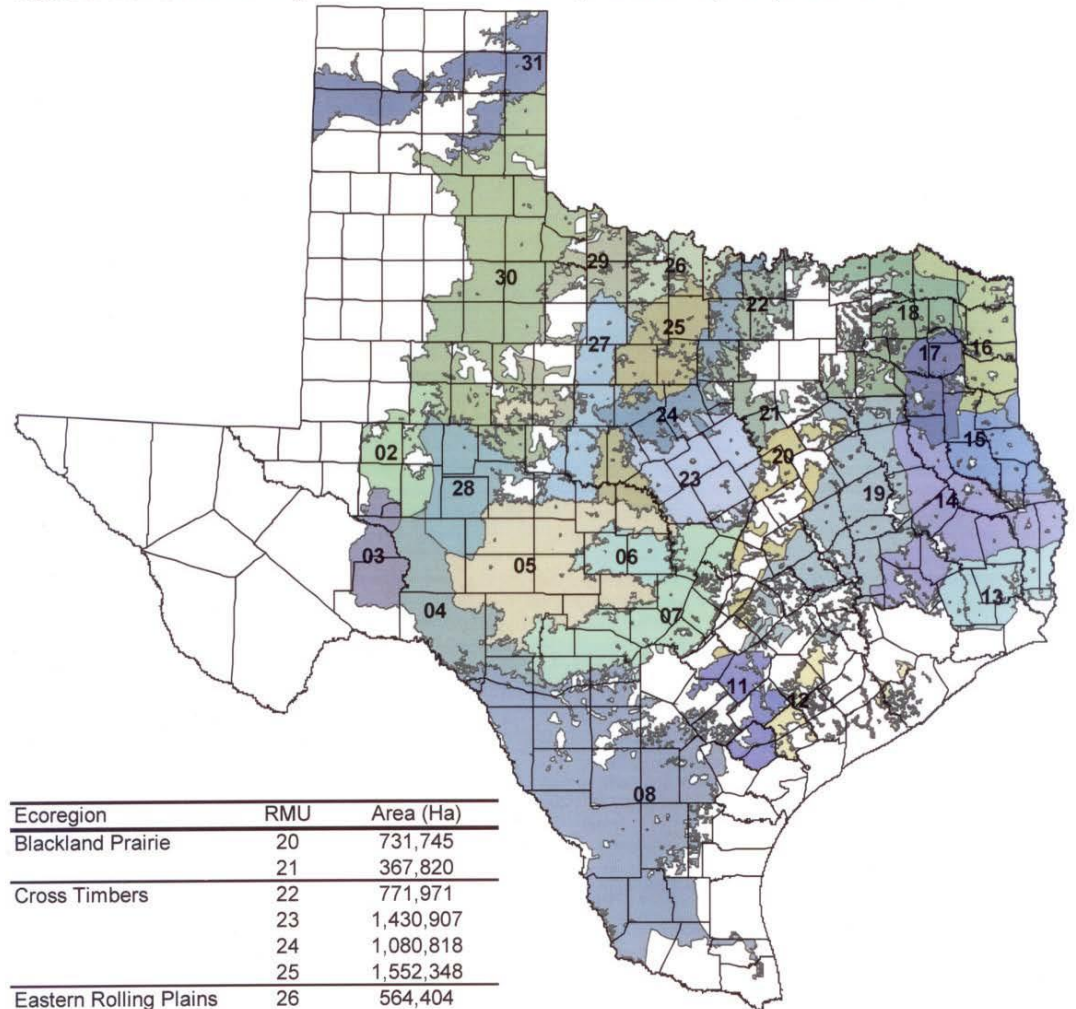
# Deer Density Sources

- TPWD County Biologists
  - <http://www.tpwd.state.tx.us/landwater/land/habitats/county/>
- TPWD Publications
  - Lockwood, M. (2005). *White-tailed Deer Population Trends*.
  - Pineywoods Deer Herd Status Report
    - [http://www.tpwd.state.tx.us/publications/pwdpubs/media/pwd\\_bk\\_w7000\\_0088a.pdf](http://www.tpwd.state.tx.us/publications/pwdpubs/media/pwd_bk_w7000_0088a.pdf)
  - The Post Oak Savannah Deer Herd Past, Present, Future
    - [http://www.tpwd.state.tx.us/publications/pwdpubs/media/pwd\\_rp\\_w7000\\_0237b.pdf](http://www.tpwd.state.tx.us/publications/pwdpubs/media/pwd_rp_w7000_0237b.pdf)
  - Frio County White-tailed Deer Population Data
    - [http://www.tpwd.state.tx.us/landwater/land/habitats/southtx\\_plain/regulatory/pop\\_trends/frio\\_pop.phtml](http://www.tpwd.state.tx.us/landwater/land/habitats/southtx_plain/regulatory/pop_trends/frio_pop.phtml)
  - White-tailed Deer Management In The Texas Hill Country
    - [http://www.texasconservation.org/resources/pwd\\_rp\\_w7000\\_0828.pdf](http://www.texasconservation.org/resources/pwd_rp_w7000_0828.pdf)
  - Guidelines For White-tailed Deer Management In The Cross-timbers And Prairies Region Of North Texas
    - [http://www.tpwd.state.tx.us/publications/pwdpubs/media/pwd\\_rp\\_w7000\\_1133.pdf](http://www.tpwd.state.tx.us/publications/pwdpubs/media/pwd_rp_w7000_1133.pdf)



# Resource Management Units in Texas

Figure 1. Monitored deer range within the Resource Management Units (RMU) of Texas.



Ecoregion	RMU	Area (Ha)
Blackland Prairie	20	731,745
	21	367,820
Cross Timbers	22	771,971
	23	1,430,907
	24	1,080,818
	25	1,552,348
Eastern Rolling Plains	26	564,404
	27	1,162,939
	29	1,091,385
Edwards Plateau	4	1,308,326
	5	2,807,841
	6	583,685
	7	1,909,010
	28	1,246,008
Pineywoods	13	949,342
	14	1,755,050
	15	862,622
	16	1,056,147
	17	735,592

Ecoregion	RMU	Area (Ha)
Post Oak Savannah	11	690,618
	12	475,323
	18	1,290,491
	19	2,528,747
South Texas Plains	8	5,255,676
Southern High Plains	2	810,505
TransPecos	3	693,080
Western Rolling Plains	30	4,223,231
	31	1,622,158
<b>Total</b>		<b>39,557,788</b>

# Deer densities in other WPPs

- Upper Llano – 10.1 ac/deer
- Copano Bay – 13.5 ac/deer
- Leon River – 27.5 ac/deer
  - RMU23 – 56.6/1000 ac
  - RMU24 – 8.4/1000 ac
- Buck Creek – 36 ac/deer
- Plum Creek – 127 ac/deer

# Feral Hog/ Wild Pig density data

2012: 2.6 million feral hogs in  
Texas

2017 estimates 3-5 million feral  
hogs in Texas



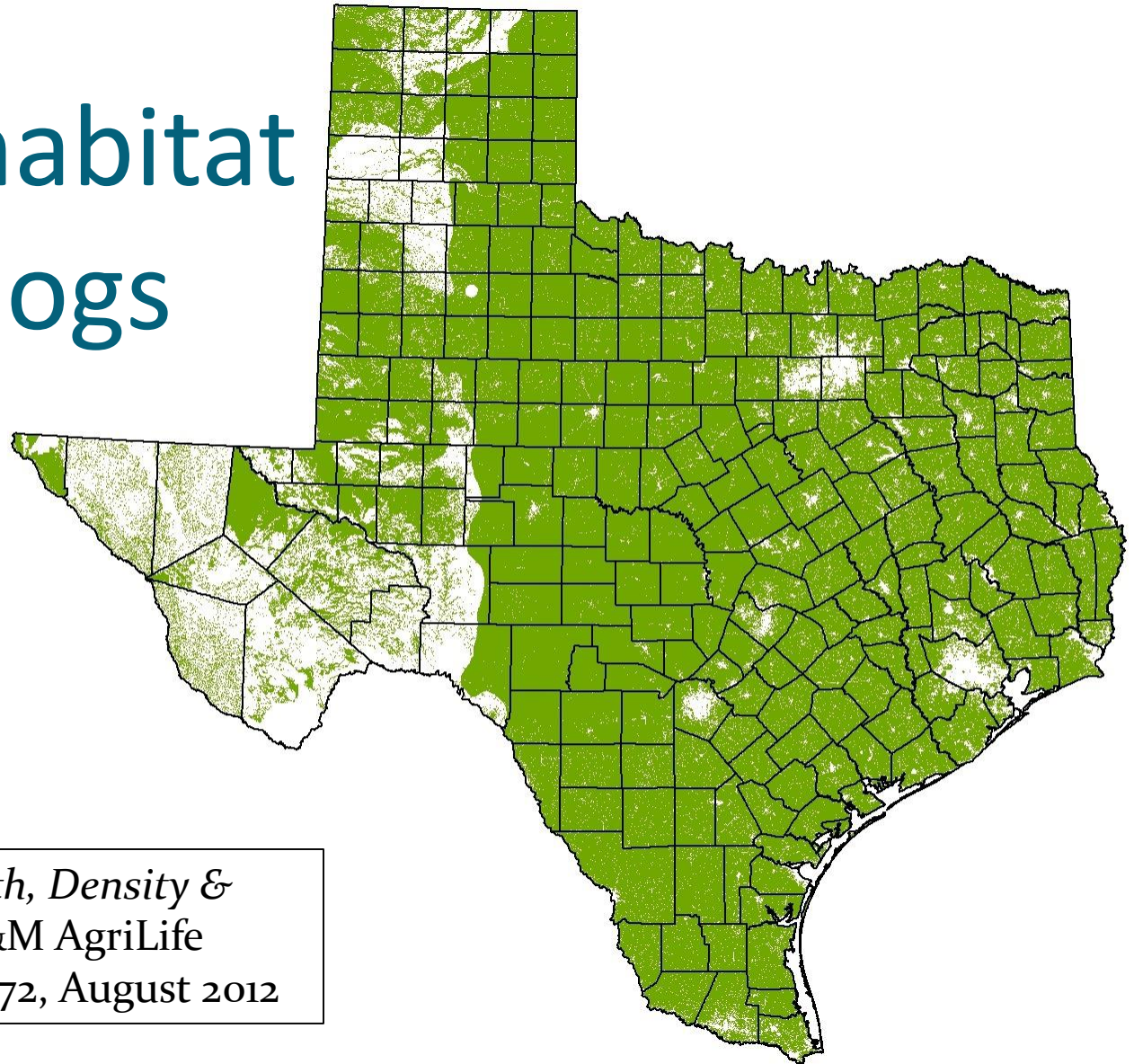


# 2012 Feral Hog Density Study

*Texas A&M Institute of Renewable Natural Resources*

- Average hog density in Texas from reported studies
  - ranged from 1.3-2.5 hogs/mi<sup>2</sup>
  - this range represents a 95<sup>0</sup>% confidence interval.
- By multiplying hog density estimate & total potential suitable feral hog habitat
  - estimated 1.8-3.4 million hogs (mean 2.6 million hogs) statewide

# Suitable habitat for feral hogs



*Feral Hog Population Growth, Density & Harvest in Texas – Texas A&M AgriLife Extension Publication SP-472, August 2012*

# Feral Hog Density Data Sources

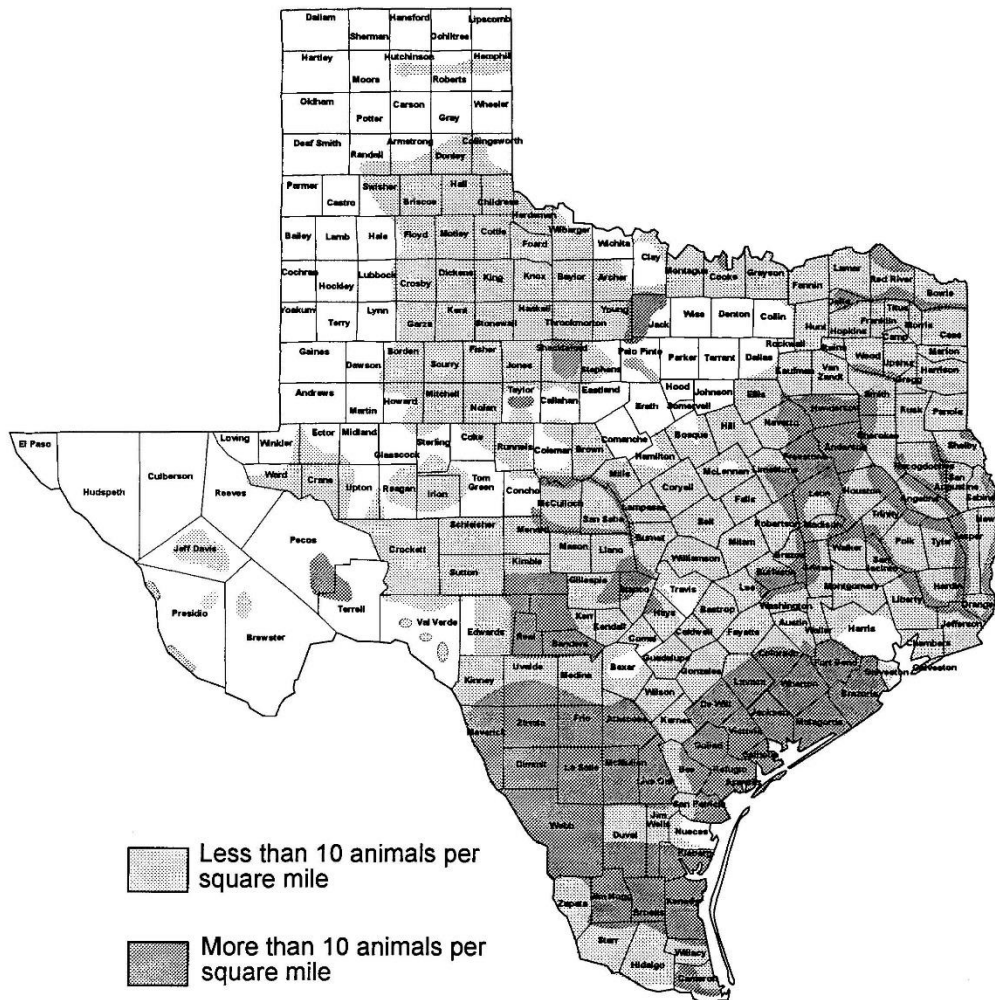
- TPWD County Biologists
  - <http://www.tpwd.state.tx.us/landwater/land/habitats/county/>
- Stakeholder group
- Published studies in Texas
  - Adkins & Haveson. 2007. Demographic and spatial characteristics of feral hogs in the Chihuahuan Desert, Texas. *Human–Wildlife Conflicts* 1(2):152–160, Fall 2007
  - Harveson, L. A., M. E. Tewes, N. J. Silvy, J. D. Hillje, and J. Rutledge. 2000. Prey use by mountain lions in southern Texas. *Southwestern Naturalist* 45:472–476.
  - Ilse, L. M., and E. C. Hellgren. 1995. Resource partitioning in sympatric populations of collared peccaries and feral hogs in southern Texas. *Journal of Mammalogy* 76:784–789.



# Other Published Studies on Feral Hogs

- Mapston, M. E. 2004, May. Feral hogs in Texas. Publication B-6149. College Station: Texas Cooperative Extension, Wildlife Services.
- Reidy, M. M. 2007. Efficacy of electric fencing to inhibit feral pig movements and evaluation of population estimation techniques. Thesis. Kingsville, Texas: Texas A&M University-Kingsville.
- Rollo, S., L. D. Highfield, and M. P. Ward. 2007. A novel estimation method for predicting spatial density of feral swine using ecological data. GISVET '07 – Pre Conference Draft. College Station, Texas: Texas A&M University, Department of Veterinary Integrative Biosciences.
- Taylor, R. 1991. The feral hog in Texas. Texas Parks and Wildlife Department. Federal Aid Report Series No. 28. Project W-125-R. 20 pp.
- University of Georgia. 1993. Southeastern Cooperative Wildlife Disease Study.

# WILD SWINE DISTRIBUTION IN TEXAS 1993



Prepared by the Southeastern Cooperative Wildlife Disease Study, College of Veterinary Medicine, The University of Georgia

Support for this project was through Cooperative Agreement Number 12-34-93-032-CA, Veterinary Services,  
Animal and Plant Health Inspection Service, U.S. Department of Agriculture

# Feral Hog Densities In Other WPPs

- Feral hog densities range from 12-26 hogs/sq. mi.
  - Plum Creek – 12 hogs/sq. mi.
  - Leon River – 18.9 hogs/sq. mi.
  - Copano Bay watershed – 19.2 hogs/sq. mi.
  - Upper Llano – 21.3 hogs/sq. mi.
  - Geronimo Creek – 25 hogs/sq. mi.
  - Buck Creek – 25.6 hogs/sq. mi.



# Copano Bay Case Study



# Estimated Beef Cow Numbers By County (Texas Agricultural Statistics)

<b>County</b>	<b>2004</b>	<b>2005</b>	<b>2006</b>	<b>2007</b>	<b>2008</b>
Aransas	2,000	1,000	1,000	1,000	1,000
Bee	32,000	29,000	30,000	32,000	45,000
Goliad	39,000	37,000	39,000	45,000	44,000
Karnes	45,000	42,000	41,000	43,000	39,000
Refugio	24,000	23,000	23,000	24,000	23,000
San Patricio	7,000	7,000	7,000	7,000	7,000
<b>Total</b>	<b>149,000</b>	<b>139,000</b>	<b>141,000</b>	<b>152,000</b>	<b>159,000</b>

# Est. Beef Cows in Copano Watershed (From 2004 - 2008 County Averages)

<b>County</b>	<b>County Average</b>	<b>Percent in Watershed</b>	<b>Beef Cows</b>
Aransas	1,200	34.7%	417
Bee	33,600	88.6%	29,766
Goliad	40,800	37.8%	15,418
Karnes	42,000	3.7%	1,571
Refugio	23,400	62.7%	14,674
San Patricio	7,000	64.3%	4,502
Total	148,000	-	66,348



# Estimated Cattle Distribution In Copano Bay Watershed

Land Use Classification	Area (ac)	SR (ac/ AU)	Cattle (AU)
Open Water	6,794		
Developed Open Space	53,312		
Developed Low Intensity	16,473		
Developed Medium Intensity	4,888		
Developed High Intensity	1,067		
Bare Rock/Sand/Clay	4,082		
Deciduous Forest	67,256	20.0	3,363
Evergreen Forest	4,930	20.0	246
Mixed Forest	423	20.0	21
Shrub, Scrub	438,417	30.0	14,614
Grasslands/Herbaceous	62,791	15.4	4,066
Pasture/Hay	340,081	7.7	44,038
Cultivated Crops	315,781		
Woody Wetlands	26,344		
Emergent Herbaceous	46,092		
<b>TOTAL</b>	<b>1,388,731</b>		<b>66,348</b>

# Est. Deer in Copano Watershed Based on TPWD County Biologist Estimates

<b>County</b>	<b>Density (ac/deer)</b>	<b>Acres of County in Watershed (ac)</b>	<b>Total Deer</b>
Aransas	100	52,307	523
Bee	14.11	499,755	35,419
Goliad	12.4	208,049	16,778
Karnes	20	18,126	906
Refugio	20	316,345	15,817
San Patricio	15	291,106	19,407
Total			88,850

# Feral Hog Estimates

- Reidy (2007) study at Welder Wildlife Refuge estimated feral hog density at 33.3 ac/hog
  - When applied to all ag lands in watershed, it's estimated that there's **37,718** feral hogs in watershed
- Rollo et al. (2007) estimated 460,262 hogs in 33-county area (i.e. 13,947 hogs/county), including most counties in watershed
  - When applied to % of county in watershed, it's estimated there's **40,708** feral hogs in the watershed
- 1993 Southeastern Cooperative Wildlife Disease Study estimated feral hog density  $>10/\text{mi}^2$ 
  - Taylor (1991) estimated TX feral hog pop. at 1 million
  - Mapston (2004) found TX feral hog numbers had doubled to 2 million
  - Based doubling of 10 hogs/ $\text{mi}^2$  to 20 hogs/square mi. & applied to 1,388,731 land acres in watershed, it's estimated there's **43,398** feral hogs in watershed

# Est. Feral Hogs in Copano Watershed Based on TAMU-K Estimates

Land Use Category	Acres	Density (ac/hog)	Feral Hog Pop.
Open Water	6,794		
Developed Open Space	53,312		
Developed Low Intensity	16,473		
Developed Medium Intensity	4,888		
Developed High Intensity	1,067		
Bare Rock/Sand/Clay	4,082		
Deciduous Forest	67,256	33.3	2,020
Evergreen Forest	4,930	33.3	148
Mixed Forest	423	33.3	13
Shrub, Scrub	438,417	33.3	13,166
Grasslands/Herbaceous	62,791	33.3	1,885
Pasture/Hay	340,081	33.3	10,212
Cultivated Crops	315,781	33.3	9,483
Woody Wetlands	26,344	33.3	791
Emergent Herbaceous	46,092		
<b>TOTAL</b>	<b>1,388,731</b>		<b>37,718</b>

# Estimated numbers of livestock & wildlife in the Copano Bay watershed

	Aransas	Bee	Goliad	Karnes	Refugio	San Patricio	Total
<b>Beef Cattle</b>	417	29,766	15,418	1,571	14,674	4,502	66,348
<b>Horses</b>	16	1,232	335	36	434	426	2,479
<b>Goats</b>	139	2,458	425	81	251	257	3,611
<b>Sheep</b>	0	594	61	12	45	215	927
<b>Hogs</b>	5	100	26	1	14	477	623
<b>Layers</b>	12	703	325	0	40	298	1,377
<b>Pullets</b>	0	120	28	10	0	383	542
<b>Broilers</b>	0	170	95	0	0	408	673
<b>Turkey</b>	5	0	13	4	0	6	28
<b>Deer</b>	523	35,419	16,778	906	15,817	19,407	88,850
<b>Feral Hogs</b>	N/A	N/A	N/A	N/A	N/A	N/A	37,718



# Questions/Discussion

