

# 303(d) VISION

A New Approach to Address  
Impaired Water Bodies

Communities Working Together  
**Taking Care of Our Rivers, Lakes, and Bays**  
Total Maximum Daily Load Program



# 303(d) VISION

- A strategy to improve on the TMDL approach to addressing impairments
- TMDLs are still important and required, but the new Vision also gives credit for trying alternative restoration efforts first; if standards are then met, a TMDL is not needed
- Will be built into the National Water Program Guidance

# NEW PERFORMANCE MEASURE

## WQ27

- Based on the 303(d) Vision
- Developed by the States and EPA in 2013 - 14
- Replaces the current, number of TMDLs per year, measure
- A 7 year effort (2016-2022)
- The goal is approved plans for impairments

# NEW PERFORMANCE MEASURE

## WQ27

- 4 Elements
  - Priority waters
  - Universe
  - Baseline
  - Targets
- Performance Measure starts 2016
- Goals will be set for 2016 - 2022

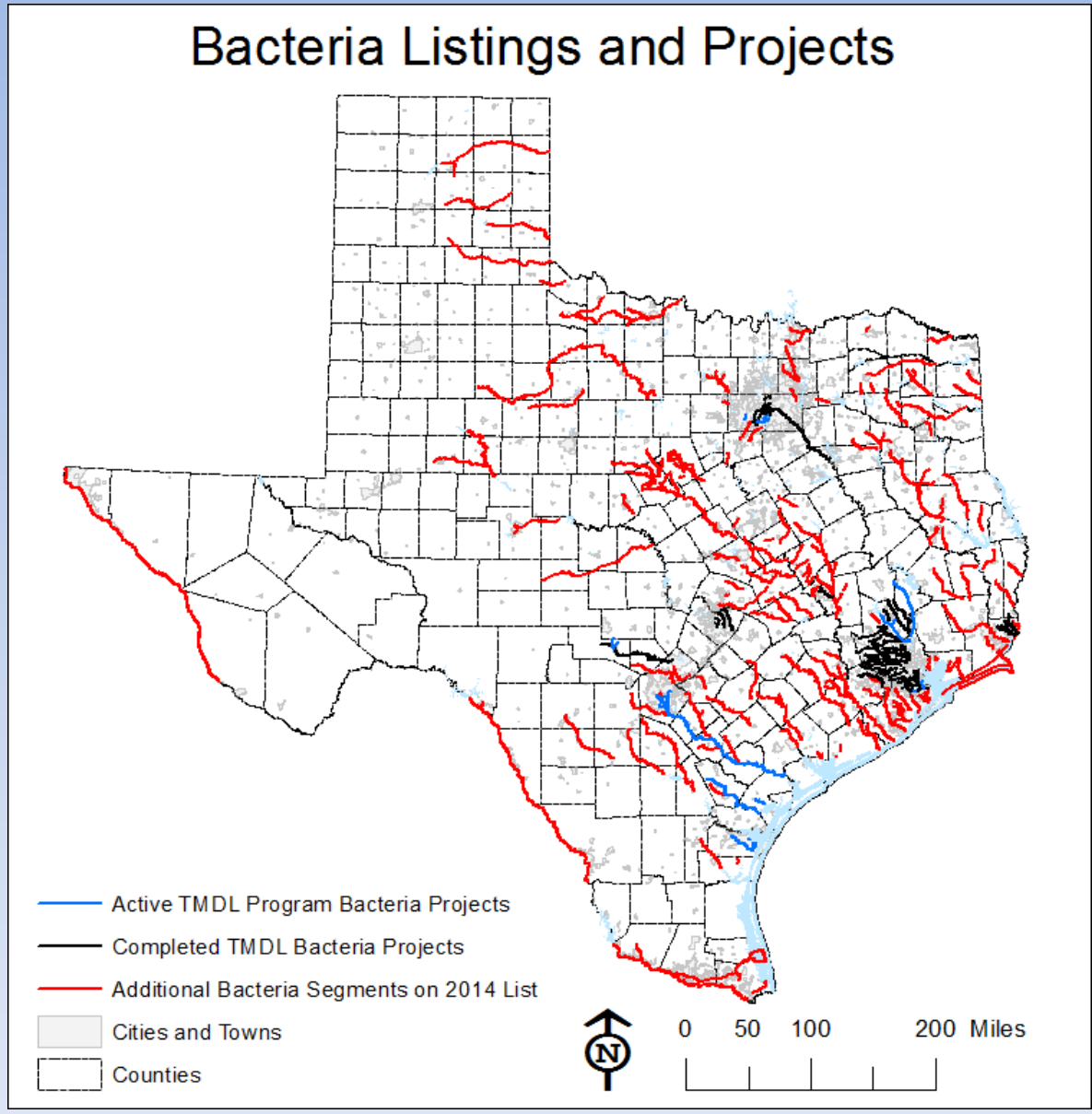
# NEW PERFORMANCE MEASURE

- Priority Waters
  - Geographic Area, or
  - Pollutant, or
  - Use, or
  - Combination
- Targets
  - Yearly goals will be set for 2016 - 2022

# PRIORITY WATERS

- **Bacteria / Contact Recreation Use Impairments**
- About 43% of the 2014 303(d) list impaired segments
- Every River Basin in Texas has at least one bacteria impairment
- About 10 years of experience
  - TCEQ Programs
  - Water Quality Partners
    - TSSWCB, River Authorities, Municipal Water Districts
  - Contractors
  - Stakeholders

# Bacteria Listings and Projects



# UNIVERSE

- The universe is the total area (in acres) of the priority waterbodies identified by each state
- The priorities and universe can change based on stakeholder interest and new 303(d) List and funding



# BASELINE

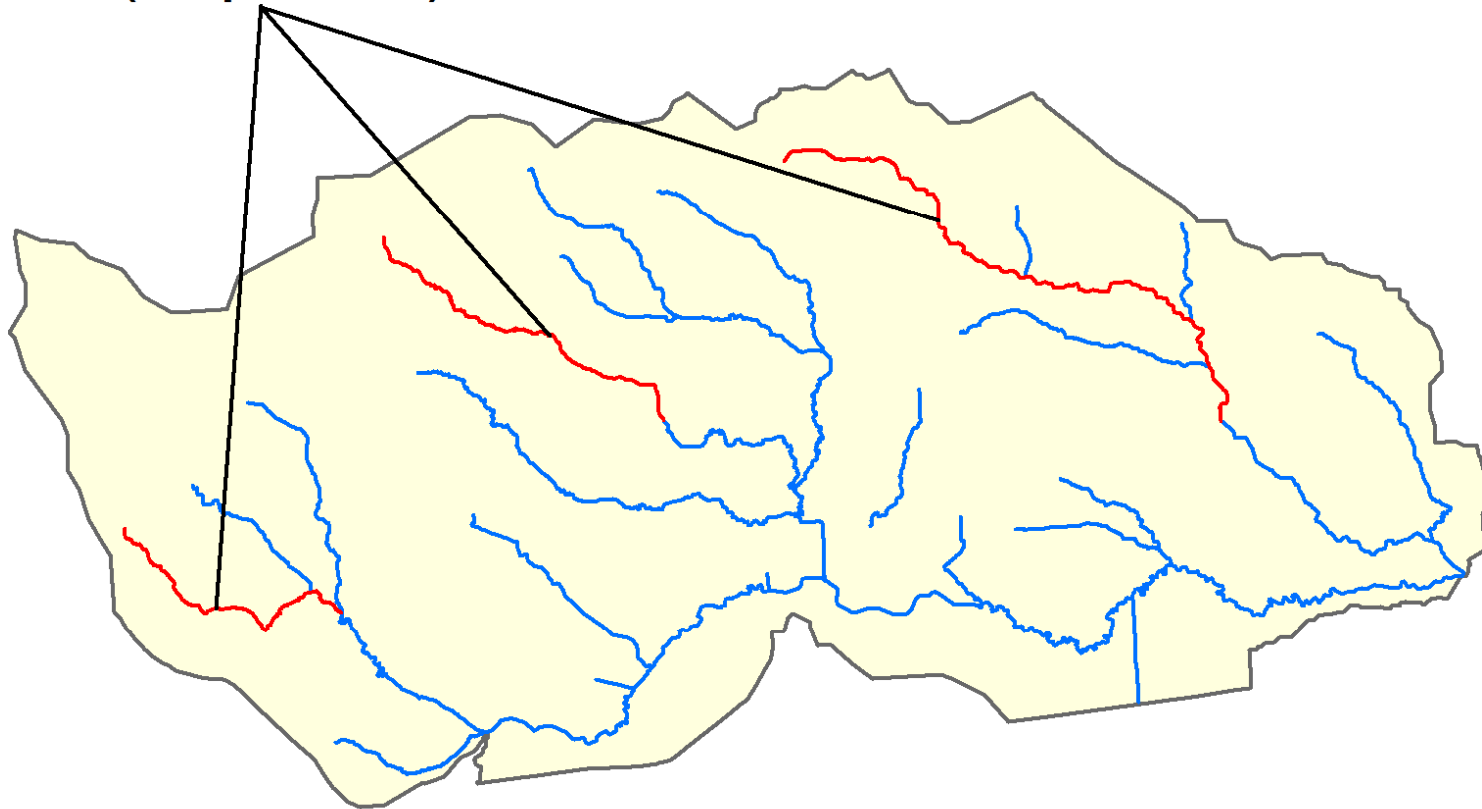
- The baseline is the percentage of the Universe that has an approved plan in place
- Approved plans include:
  - TMDL and Implementation Plan
  - Watershed Protection Plan

# TARGETS

- Priority Water areas projected to have a TMDL or alternative restoration or protection plan per year by 2022
- States identify annual commitments in each year to work toward the 2022 target

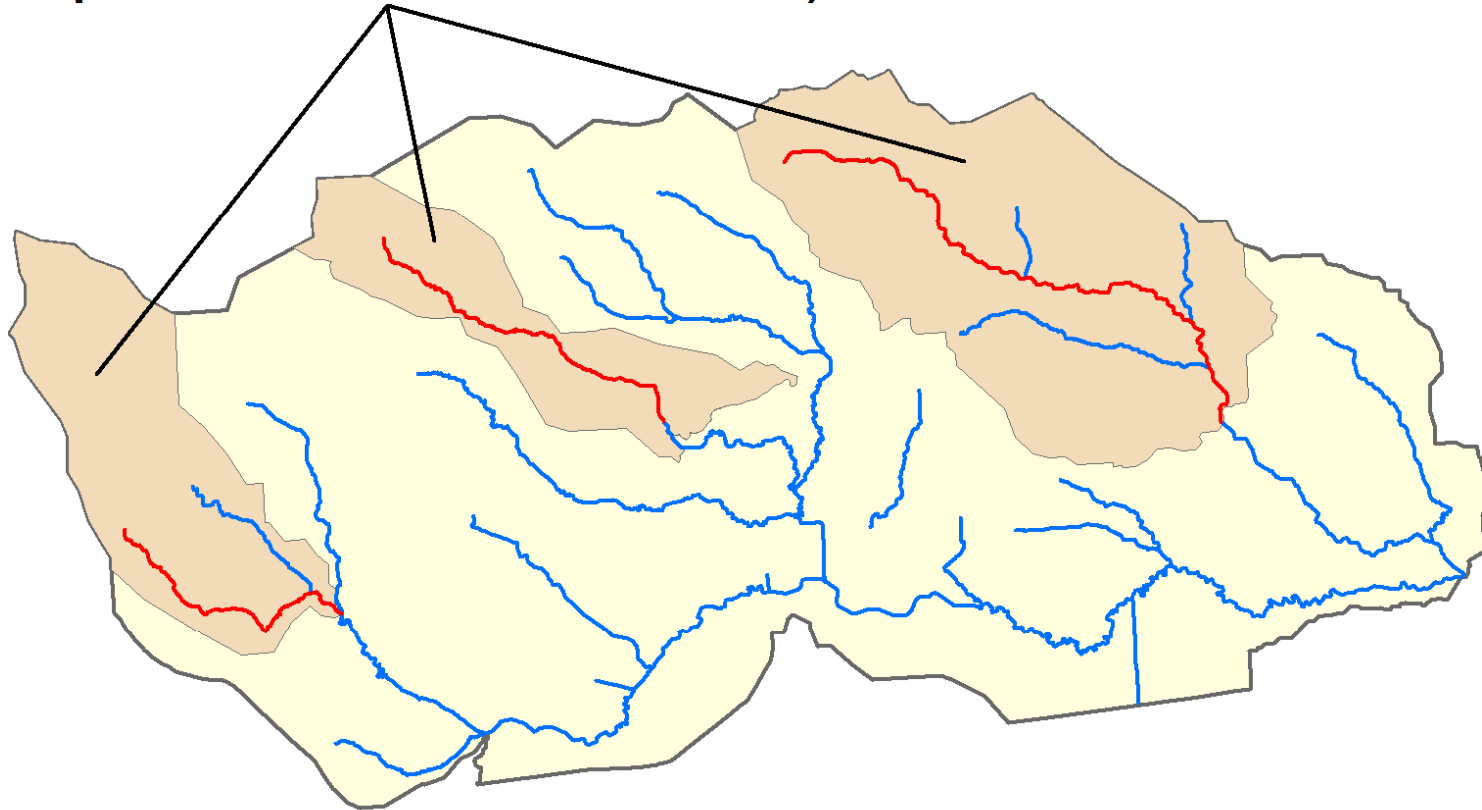
# Example – Priority Waters

Priority Waters  
(Impaired)



# Example – Universe

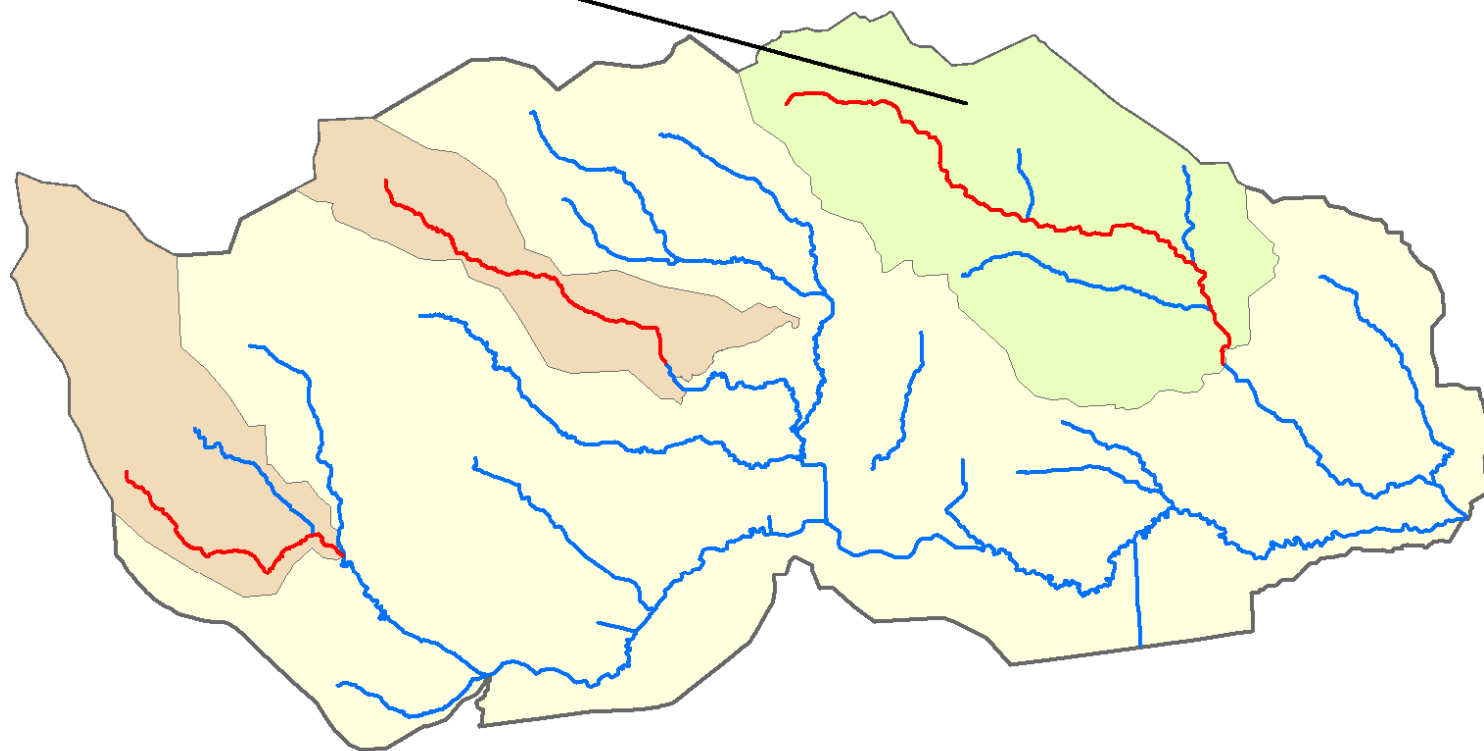
Universe  
(Impaired Subwatersheds)



200 Sq. Miles

# Example – Baseline

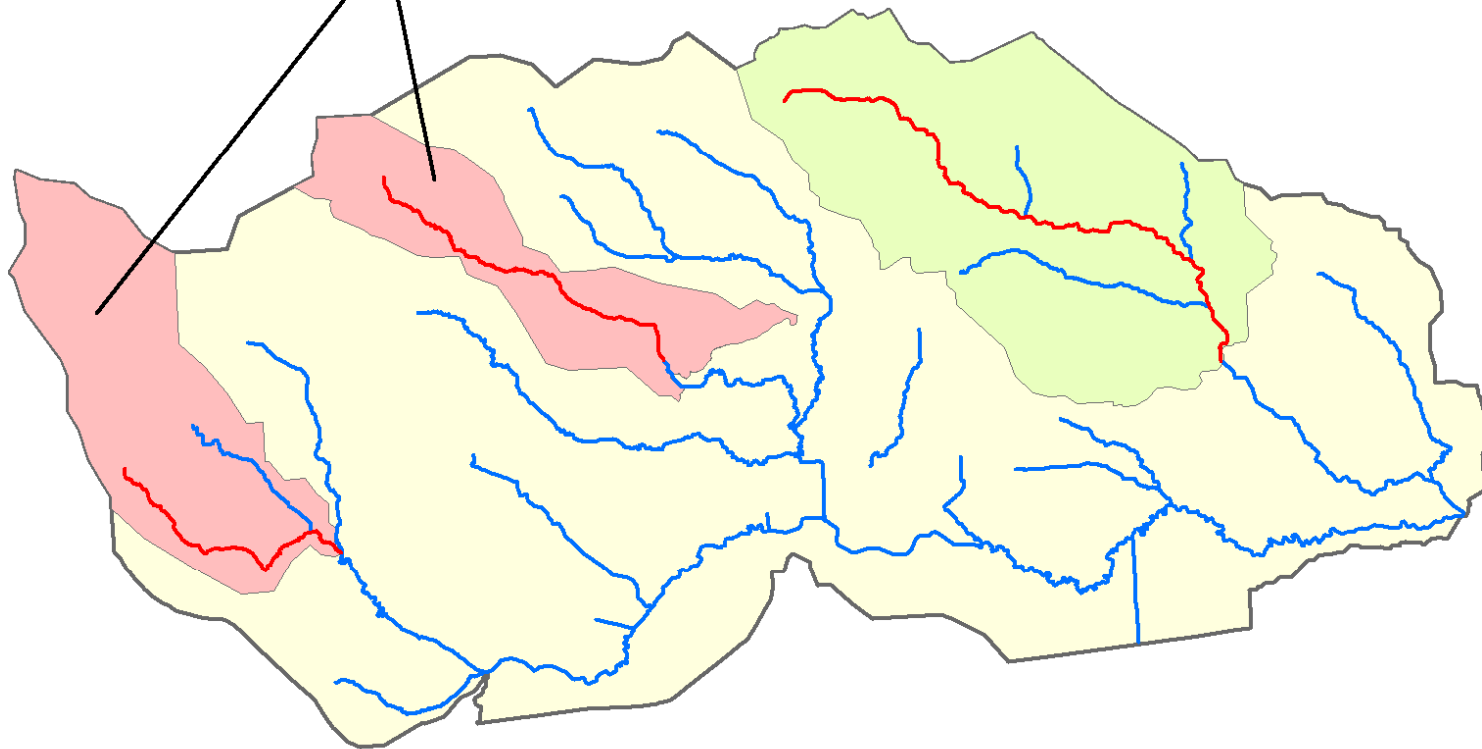
Baseline  
(Completed Subwatersheds)



90 Sq. Miles  
45%

# Example – Target

Target  
(To Be Completed By 2022)



200 Sq. Miles  
100%

# VISION AREAS, WQ 27

	Target		
Target	Yearly Area (Acres)	Cumulative Area (Acres)	Percent
<b>Baseline</b>	1,318,360.1	1,318,360.1	<b>10.8%</b>
<b>2016</b>	2,291,055.5	3,609,415.6	<b>29.6%</b>
<b>2017</b>	1,678,543.4	5,287,959.0	<b>43.3%</b>
<b>2018</b>	1,215,814.4	6,503,773.4	<b>53.3%</b>
<b>2019</b>	1,505,171.8	8,008,945.2	<b>65.6%</b>
<b>2020</b>	2,553,812.6	10,562,757.8	<b>86.6%</b>
<b>2021</b>	1,003,681.7	11,566,439.5	<b>94.8%</b>
<b>2022</b>	635,012.3	12,201,451.8	<b>100.0%</b>

# PLANS

- TMDL and Implementation Plan
  - TCEQ-adopted and EPA-approved TMDL
  - TCEQ-approved Implementation Plan
- Alternative Plans
  - Watershed Plans
  - 319 (h) Grants
  - EPA Approved
- Both
- Other



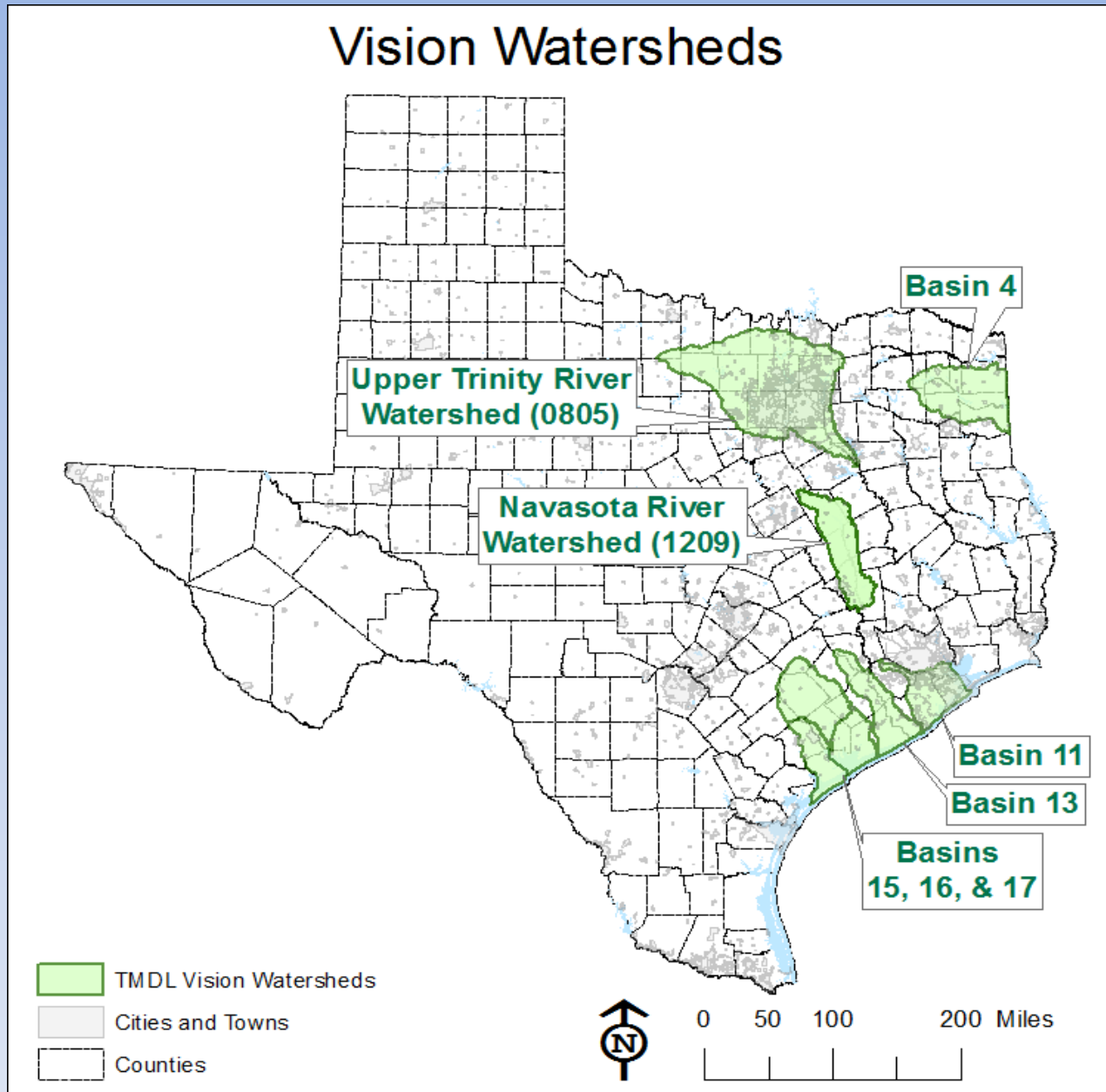
# Alternatives

- Identification of waters to be addressed
- Analysis to support how the alternative is going to achieve WQS
- Action plan including a schedule of actions and milestones
- Funding opportunities

# Alternatives con't

- Responsible parties
- Timeline when WQS are expected to be met
- Plans for effectiveness monitoring
- Commitment to periodically evaluate the alternative restoration approach

# Vision Watersheds



# GENERAL APPROACH

- 7 years to complete the plans
- Initial Efforts
  - Outreach to raise awareness in the watershed
  - Determine the need for Standard review and/or additional sampling
  - Complete the sampling

# GENERAL APPROACH

- Completion
  - Organize stakeholders into a balanced representation Coordination Committee
  - Get stakeholder consensus on what approach will be used to develop plans
  - Coordination Committee directs stakeholder development of plans

# NEXT STEPS

- Continue work in several watersheds
  - Basins 15, 16, and 17 (Colorado-Lavaca Coastal Basin, Lavaca River Basin and Lavaca-Guadalupe Coastal Basin)
  - Navasota River Watershed (1209)
  - Upper Trinity River Watershed (0805)
  - Other Projects

# NEXT STEPS

- Continue work in several watersheds
  - San-Jacinto Brazos Coastal (11)
  - Brazos-Colorado Coastal Basin (13)
    - Facilitate public education and outreach
    - Identify and meet with key stakeholders
    - Gather, organize and summarize existing data and reports



# QUESTIONS?

[Chris.Loft@tceq.texas.gov](mailto:Chris.Loft@tceq.texas.gov)

## Communities Working Together

Taking Care of Our Rivers, Lakes, and Bays

TCEQ Total Maximum Daily Load Program

