

TEXAS WATERSHED PLANNING  
*Short Course*



**What's a Watershed Protection Plan?**

**"A strategy & work plan for achieving water resource goals that provides assessment & management information for a geographically defined watershed" - EPA**

**History of Watershed Planning**

*Watershed Protection Approach  
Framework*

Endorsed by senior EPA managers in  
**1991**

**Top 10 Watershed Lessons:**

1. The best plans have clear visions, goals & action items.
2. Good leaders are committed & empower others.
3. Having a coordinator at the watershed level is desirable.
4. Environmental, economic & social values are compatible.

**Top 10 Watershed Lessons:**

5. Plans only succeed if implemented.
6. Partnerships equal power.
7. Good tools are available.
8. Measure, communicate & account for progress.

**Top 10 Watershed Lessons:**

9. Education & involvement drive action.
10. Build on small successes.



## Nine Elements of a WPP

- A. Identification of causes & sources
- B. Estimate of load reductions needed
- C. Description of mgt measures needed
- D. Technical & financial assistance needed

## Nine Elements of a WPP

- E. Information & education strategy
- F. Implementation schedule
- G. Interim milestones
- H. Criteria to determine load reductions
- I. Effectiveness monitoring

## How do you develop a WPP?

1. Build Partnerships
2. Characterize the Watershed
3. Finalize Goals and Identify Solutions
4. Design an Implementation Program
5. Implement Watershed Plan
6. Measure Progress & Make Adjustments

## What Makes Watershed Planning Different From Other Planning?

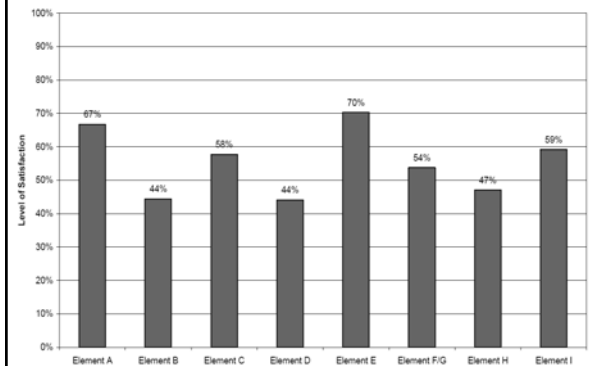
- Geographically defined
- Iterative
- Holistic
- Integrated
- Collaborative



## WPPs vs. TMDLs

- WPPs address all sources & causes of watershed impairments & threats
  - TMDLs generally address one pollutant in one waterbody segment
  - WPPs integrate TMDLs/TMDL-IPs, water quantity, source water assessments & protection plans, development pressures, wetland & habitat protection & restoration
- WPPs typically voluntary & locally driven
- TMDLs typically regulatory & state driven

## The Need For Training



## Planning Team Members

- AgriLife Extension
- AgriLife Research
- EPA
- TCEQ NPS Team
- TCEQ TMDL Team
- Texas River Systems Institute
- TIAER
- TSSWCB
- TWRI



## Goal of Short Course



Help Water Professionals:

1. develop scientifically defensible plan that
2. meets EPA's 9 key elements & is
3. supported by the local community &
4. will lead to measurable results &
5. an overall improvement in water quality.

## Course Organization Integrates:

- Six Steps in Watershed Planning
- Nine Key Elements
- *Handbook for Developing Watershed Plans* – EPA, 2008

## 6 Steps in Watershed Planning

- Monday 1.) Building Partnerships
- Tuesday 2.) Characterize Watershed
- Wednesday 3.) Set Goals & Identify Solutions
- Thursday 4.) Design Implementation Program
- Friday 5.) Implement Plan
- 5.) Measure Progress & Adjust

## Nine Elements

Day	Element
Tues	A. Identification of causes & sources
Wed	B. Estimate of needed load reductions
Wed/Thurs	C. Description of management measures
Thurs/Fri	D. Estimate of technical & financial assistance
Tues	E. Information/education component
Thurs	F. Schedule for implementation
Thurs	G. Description of interim, measurable milestones
Thurs	H. Criteria to determine if load reductions are achieved
Thurs	I. Monitoring component to evaluate effectiveness

## EPA Handbook

Day	Chapter
Mon	1. Introduction
Mon	2. Overview of Watershed Planning Process
Mon	3. Build Partnerships
Tues	4. Define Scope of Watershed Planning Effort
Tues	5. Gather Existing Data & Create an Inventory
Tues	6. Identify Data Gaps & Collect Additional Data
Tues	7. Analyze Data to Characterize the Watershed
Tues/Wed	8. Estimate Pollutant Loads
Tues	9. Set Goals & Identify Load Reductions
Wed/Thurs	10. Identify Possible Management Strategies
Thurs	11. Evaluate Options & Select Final Mgt Strategies
Tues/Th/Fri	12. Design Implementation Program & Assemble Plan
Fri	13. Implement Watershed Plan & Measure Progress

## Description of course materials

- Notebook
  - Agenda
  - Presentations
  - List of Participants
  - Survey
  - Bios
  - Additional Resources
- CD
  - Presentations
  - Handbook
  - Example WPPs
  - Plum Creek Stakeholder Resources
  - LDC Assignment Info
  - Additional Resources

Other resources on back table

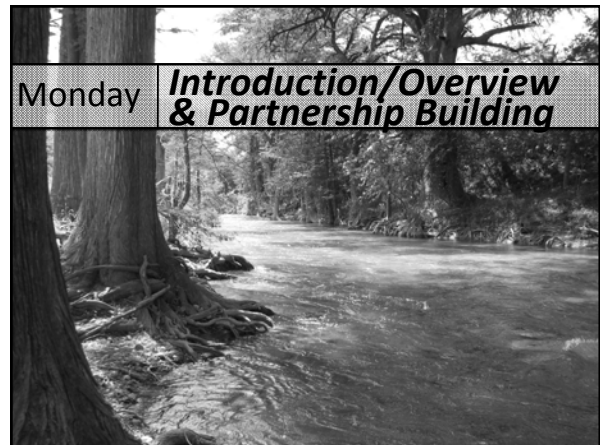
## To receive your certificate, you will need to submit :

- Pre-course Exam
- 2 Assignments
- Post-course Exam
- Course Evaluation

## Ground Rules

- Put cell phones on meeting/ silent mode
- Take side conversations outside
- To stay on schedule:
  - We will start on time
  - 5 minute warning before end of breaks
  - Unfinished discussions will be carried over to Q&A sessions in dining room each evening from 8-9 pm
- Have fun!!!

**Any Questions Before We Get Started???**



## Monday Afternoon Agenda

Facilitator : Kevin Wagner

- ◆ Introduction - Wagner
- ◆ Nine Elements of a Watershed Protection Plan - Rush
- ◆ Perspectives on WPPs Panel - Panel
- ◆ Working with Stakeholders to Move the Process Forward - MacPherson
- ◆ Partnership Building Experiences in Plum Creek - Dictson

## Monday - Materials Covered

Facilitator : Kevin Wagner

- ◆ Chapters 1-3 of the EPA Handbook
  - ◆ 1. Introduction
  - ◆ 2. Overview of Watershed Planning Process
  - ◆ 3. Build Partnerships
- ◆ Step 1 of Watershed Planning
  - ◆ Building Partnerships
- ◆ Overview of EPA Nine Elements